



EQUALITY



SUSTAINABILITY

Welcome to Homefield College

EMPOWERMENT



RESPECT





WELCOME

Homefield College provides specialist further education. We support young adults who have learning / communication needs.

Our students **achieve through experience**, learning in community-based locations. The study programmes provide tailored vocational learning.

All our pathways develop your skills so you can make informed choices about the future, further your independence and realise your potential as active citizens in your local community.

Whether you want to improve your personal care skills, learn to live more independently, or find your place in the world of work, we hope you choose to study with us. We will empower you to reach your future goals.



OUR VALUES

All our students, staff and parents / carers share a common vision.

We believe...



in a fairer society where everyone is able to participate as equals. Everyone should have the opportunity to be the best that they can be.

*This is called **Equality**.*



in sharing knowledge and skills so that people grow in confidence. They can make choices and have opportunities to improve their lives.

*This is called **Empowerment**.*



in valuing people for who they are. We will provide services that maintain dignity with compassion and caring.

*This is called **Respect**.*



that it is our responsibility to meet the needs of the present without compromising the ability of others to meet needs in the future.

*This is called **Sustainability**.*

LEARN

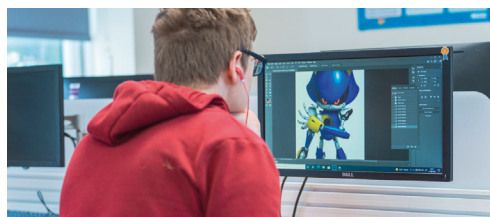
All our students follow study programmes that enable them to build upon and learn new skills and knowledge.

The study programme has core elements of our curriculum, which is designed to cover key aspects of daily life to prepare you for adulthood.

You will also have vocational learning and work experience opportunities suitable for your goals and abilities.

Every student develops their functional English & maths skills, plus employability, independence, personal development, healthy living, wellbeing & fitness.

We will also teach you how to stay safe at home / work, out in the community and online.



Find out more

Scan the QR code or visit our website to learn more about our study programmes, learning routes and curriculum.



Pathway One: Personal Development

Improve your social and communication skills to further your independence, whilst developing a range of interests.

You will learn about...

- Personal Care & Wellbeing
- Cooking & Shopping
- Domestic Skills
- Community Access & Safety

Transition Route: Supported Internship

Access internship opportunities based at an employer with the aim of securing paid work using the skills acquired.

You will learn about...

- Transferable Skills
- Resilience & Growth Mindset
- Employability & Careers
- Making informed choices

Pathway Two: Skills for Life & Work

Develop your confidence in the local community, preparing for daily life activities and work opportunities.

You will learn about...

- Life Skills & Safe Journeys
- Personal Presentation
- Employability & Careers
- Making informed choices

Transition Route: Bespoke Provision

Overcome specific barriers that prevent you from achieving, whilst developing wider skills in preparation for adulthood.

This provision may include...

- Learning at your own home or in a community building
- Additional staffing & tailored learning routes

Pathway Three: Preparing for Work

Gain the skills, communication and confidence to achieve your future goal of employment or general further education.

You will learn about...

- Employability & Careers
- Independent Living & Travel
- Qualities for Success
- Risks & Decision-making

Other Learning Routes: @ Homefield

➔ **Macintyre @ Homefield**
Supporting complex learning & communication needs.

➔ **T.E.C.K @ Homefield**
Tailored to the automotive and engineering industry.

➔ **Enstruct @ Homefield**
Focusing on construction, the environment & conservation.



WORK

We believe that 'careers' means living your best life. We will help you get a clearer idea of the routes to employment or other opportunities and activities (voluntary or paid) within your community that you will find engaging and rewarding.

You will gain a solid foundation of skills and knowledge in vocational industries. Our enterprises, vocational classes and work experience placements help you develop transferable skills that can be used across several sectors. We consider your individual needs and put support in place to help you access these opportunities at an appropriate level.

You can also take qualifications with us in a range of subjects to help widen your access to future opportunities.

We run our own enterprises too, so that you can experience work in a safe, supportive environment. This provides a great first step into the world of work before going to an external placement.

Breward's Coffee Shop helps you learn customer service, catering & hospitality skills, whilst our new training salon helps you develop skills in the hair, grooming & beauty industry. At both enterprises, students can also have experience in cleaning & domestic services.

There are lots of opportunities for you, and our Careers Team can provide guidance to help you discover the right path for you.

Work Experience: Current Employers

We have lots of organisations who offer work experience to our students.

These include:

- Imago Group
- Waitrose
- Posh Dogs Grooming
- Loughborough University
- Great Central Railway
- Timpson



Find out more

Scan the QR code or visit our website to learn more about our careers programme and work placement opportunities.



Student Views: Oliver at Timpson's

"I have gained some great skills and experience working at Timpson's for a year."

I completed Level Two watch repairs and developed my customer service skills.

I think I did brilliant."



ACHIEVE

We help students achieve their goals through integrated approaches to learning, behaviour and wellbeing support. This means we adapt our teaching and support to meet your individual needs and strengths.

Our therapies team can help improve your quality of life, your independence and help you gain a sense of belonging and purpose. Support we offer includes:

- *Speech & Language Therapy*

Supporting communication needs so that you can engage in a way that is accessible and appropriate.

- *Occupational Therapy*

Helping you to be as independent as possible through targeted support and skills built into the curriculum.

- *Behavioural Support*

Developing strategies to lessen distress that will support you to safely engage in the learning programme.

- *Mental Health & Wellbeing*

Creating a safe environment to discuss mental health concerns and get access to the right support.



Your Voice Matters: Keeping You Safe and Supported

We put your safety at the forefront of our teaching. Homefield is a safe, caring and positive environment where students are listened to, feel valued and secure.

Daily Reflections allow for recap of learning but also provide you with time to express any concerns. You also have 1:1 tutorials with Progress Mentors to reflect on the week and talk about any worries with a staff member who is not your tutor.

We work with students to develop understanding of how to stay safe within the community, learning about managing money, online safety, sexual health and relationships, equality and diversity and how to access support in the local community.

We teach you how to ask for help and to recognise signs of abuse. We challenge discrimination and help you advocate for your needs.

Get Involved: Student Union (SU)

We are part of the National Union of Students. Our Student Union meet regularly and develop working groups to achieve specific student-led goals. SU members also have the opportunity to represent Homefield at external events.

Find out more

Scan the QR code or visit our website to learn more about our holistic approaches to student support.



APPLY

Take the next steps to becoming a Homefield student. Follow our admissions process to apply:

1 Attend an Open Day
Meet staff and students, learn more about what we provide and make sure Homefield is the right place for you.

2 Say you want to come to Homefield
Name us at your EHCP review meeting, contact the Local Authority and fill in our Initial Interest Form.

3 Await a consult, assessment & our decision
Wait for the Local Authority to send us a consultation, then we will assess if we can best support you.

4 Confirm with the Local Authority & await funding
We tell the Local Authority if we can meet your needs. They then decide whether to fund your place with us.

5 Fill in your Student Information Pack
Once funding has been agreed, complete our student pack to give us up-to-date information to support you fully.

6 Come for a Transition Visit
Have the opportunity to join in with lessons, get to know fellow students and meet tutors before the new term starts.



FIND OUT MORE

There is always more to discover about Homefield College!



Look at our website:
www.homefieldcollege.ac.uk



Join us at an Open Day:
Book your place via Eventbrite (bit.ly/HomefieldOpenDays)



Give us a call:
01509 815 696



Send us an email:
contactus@homefieldcollege.ac.uk



Follow us on Social Media:
@HomefieldCollege on Facebook, Instagram & LinkedIn



Visit us:
By prior appointment only, please email or call to arrange

Main Site

217 Loughborough Road,
Mountsorrel,
Leicestershire,
LE12 7AR

Nuneaton Campus

100 Cross Street,
Nuneaton,
Warwickshire,
CV10 8JH





Homefield College

217 Loughborough Road, Mountsorrel, LE12 7AR

01509 815696 || contactus@homefieldcollege.ac.uk || www.homefieldcollege.ac.uk



A Company Limited by Guarantee
Company No. 04956068.
Registered Charity No. 1114995.

